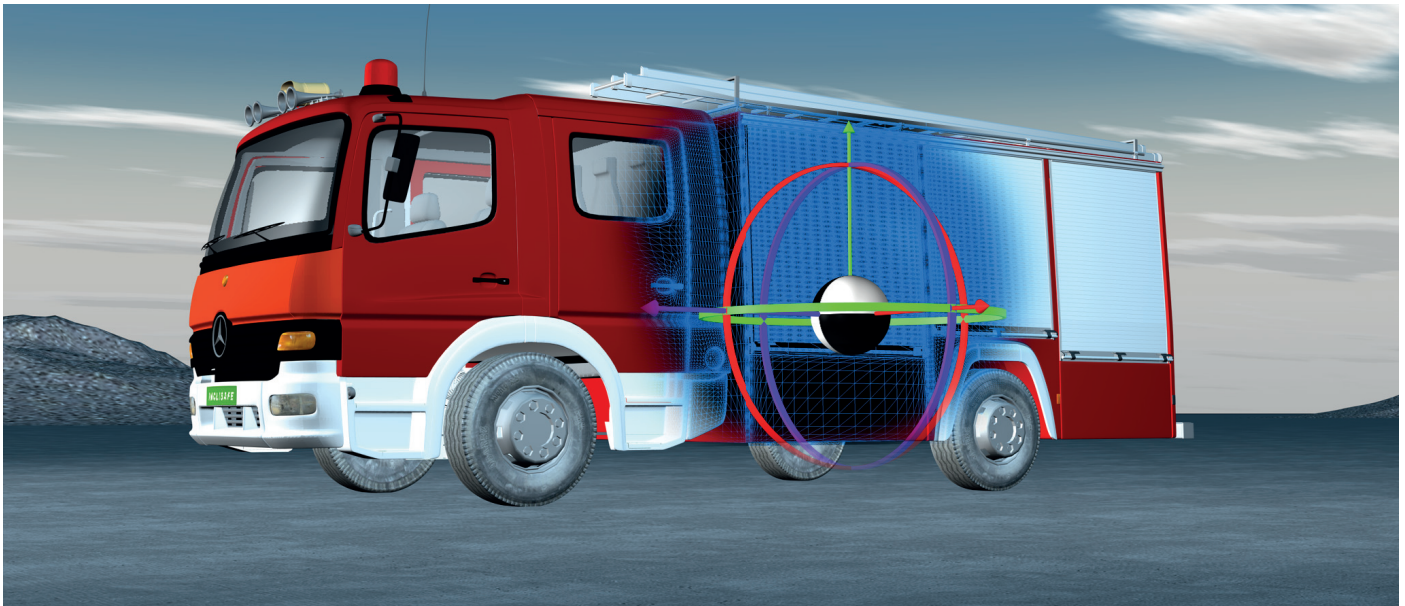


INCLISAFE - DTA

Dynamische Warnsystem

RUG
Expansion



Description

The system **analyzes the stability** of a vehicle in motion and warns of a roll-over risk. Inclisafe works as an analysis and warning system in case of dangerous driving conditions and records all relevant parameters in a data memory.

Inclisafe is programmed specifically to each vehicle and works thanks to a series of sensors contained within a black box, which record the **moments of inertia** and angular accelerations, all of that considering the technical data of the vehicle and the stability selected limit values.

Performances

- **Warning Device:** it starts running below 30% stability situations, activating an optical and acoustic signal in frequency and intensity proportional to the roll-over risk.
- **Spatial measurement:** Calculation of the vehicle stability with respect to the three coordinate axes, considering factors such as angular acceleration, lateral acceleration and other additional variables.
- **Stability Calculation:** “Inclisafe is not just limited to measuring variables but calculates the actual stability of the vehicle” 10 times per second using its own algorithms.
- It is the only system that considers the **moments of inertia** (how an object rotates with respect to an axis).

NOC Code (NATO)

- 6605-332116466

INCLISAFE - DTA

Dynamische Warnsystem



Implementation

- **Prevention of roll-over accidents:** analysis, information and continuous instability-level assessment of the vehicle. INCLISAFE “may save lives”
- Reduction of potential **maintenance and repair costs**
- **Operational Advantages:** reduces the breakdown risk, avoiding the vehicle out of order.
- **Driver Training:** learning time reduction.

Suitable for: SUITABLE FOR:

- Vehicles with high center of gravity.
- Vehicles driving in high stress conditions
- Vehicles driving through rugged terrains.
- Vehicles that must perform high-speed turns.
- Mobile load transport.

Specifications

	Sensor Unit	Display
• Dimensions	180x80x50 mm (LxWxH)	LED: 220x130x40 mm (LxWxH)
• Protection rating	IP 65	IP 54
• Interfaces	Digital	Digital
• Power	24 Vdc (15 V - 30 V)	24 Vdc (15 V - 30 V)
• Consumption	150 mA	100 mA
• Temperature range	-20°- 70°	-35°- 85°
• Memory capacity	8 Gb	

Standards

- CE Directive 2004/108 / CE on Electromagnetic Compatibility
- Standards of NFPA 414/2012, EN 894-1, EN 61310-1-2, EN 61000-6-1; EN 61000-6-3.
- The system is registered in the NATO database under the number NSN 6605-332116466.

INCLISAFE - DTA

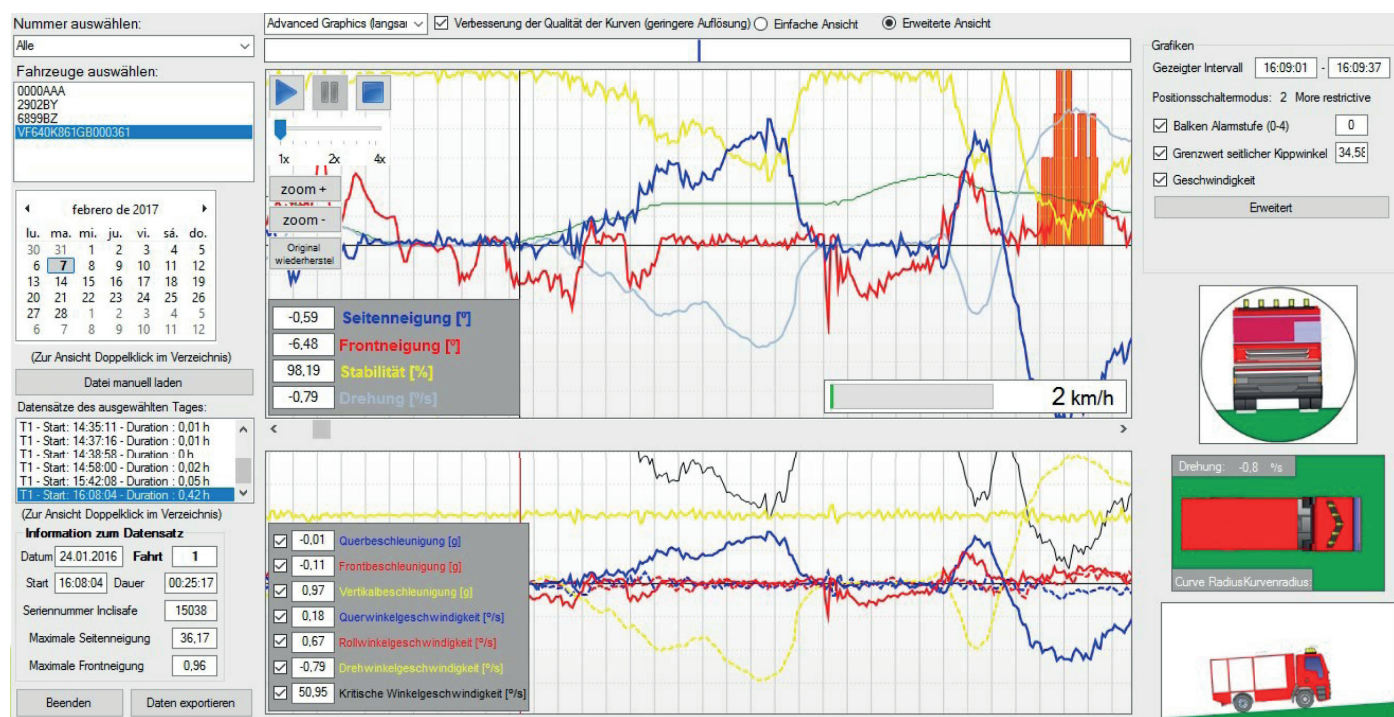
Dynamische Warnsystem

RUG

Expansion

Software

- INCLISOFT software allows you to download data and **graphical analysis** stored in the drive.
- It has a specific driving training function.



References

INSTALLATIONS

• 4x4 Firefighters	70
• ASTRA 4x4 de Tn.	180
• ASTRA 6x6 de 26 Tn.	80
• ASTRA 8x8 de 32 Tn.	12
• MAXXPRO RECOVERY	14
• DEVICES VEHICLES RG-31	140

UPCOMING INSTALLATIONS 2017 - 2020

• VCR 8x8	5
• ASTRA 4x4 de 19 Tn.	80
• ASTRA 6x6 de 26 Tn.	50
• ASTRA 8x8 de 32 Tn.	325
• Firefighters	200

Contact

RUG EXPANSION

Eupenerstr. 124
50933 Köln
Tel.+ 49 163 7564 653
Tel.+ 49 152 3409 9096
info@rugexport.de

TECHNICAL SPECIFICATIONS