

SEC

Continuous stabilization system

RUG

Expansion



Beschreibung

SEC (Continuous Stabilisation System) is a tool developed for rescue operations in road traffic. Its function is to stabilize the accident vehicle in order to minimize the movements that take place during the release process. SEC optimises the rescue of injured persons and considerably shortens the intervention time.

Während des Freisetzungsprozesses verliert das stabilisierte Fahrzeug durch den Ausbau
During the release process, the stabilized vehicle loses weight by removing vehicle components such as doors, windows or the occupants themselves. This leads to the vehicle becoming unstable again. The SEC system reacts to this movement automatically by readjusting itself every 2.5 mm, so that firefighters do not have to invest time and resources in re-stabilizing the vehicle, which significantly shortens the rescue time.

SEC

Stabilisierungssystem für Rettungseinsätze

RUG
Expansion

How does it work?

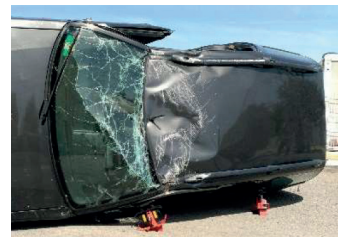
- The SEC system consists of four stabilizers. These are placed under the accident vehicle at the four support points that stabilize the car.
- The tool is extended until the upper bearing surface of the SEC system comes in contact with the vehicle and the air spring is brought into the „On“ position by the lever.
- The stabilising elements are automatically adjusted every 2.5 mm by locking tabs to ensure ground clearance. The vehicle is re-stabilized without the need for handling by the rescue staff.
- The SEC system can be used to stabilize the vehicle in all three basic positions:



On all four Wheels



On the side



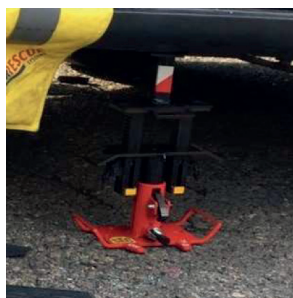
On the roof

Accessories

- Lifting plate for sports or accident vehicles without wheels.
- Height extension for off-road vehicles or transport vehicles (up to 10 cm).
- Possibility of stacking two stabilization units to achieve a greater height.



Stacking



Lifting plate



Height extension

SEC

Stabilisierungssystem für Rettungseinsätze

RUG
Expansion

Technische Daten

Dimensions and weight of the SEC stabilization device		
Length	cm.	23,5
Wide	cm.	12,5
Height in use SEC	cm.	27,5
Folded height SEC	cm.	13,5
Maximum height of use	cm.	51,5
Minimum staking height	cm.	3,5
Weight	Kg.	4,2

Norm

- UNE-ES-ISO 4414:2011
- Directiva de máquinas 2006/42/CE
- Maximum stress weight 843 KG
- Maximum breaking weight 1100 KG

Contacto

RUG EXPANSION

Eupenerstr. 124

50933 Köln

Tel.+ 49 176 9966 2682 Gomez

info@rugexport.de